

MAP3K5 Antibody(T842)
Affinity Purified Rabbit Polyclonal Antibody (Pab)
Catalog # AP7911g**Specification**

MAP3K5 Antibody(T842) - Product Information

Application	WB, IHC-P,E
Primary Accession	Q99683
Other Accession	Q9WTR2 , Q95382 , Q35099 , A2AQW0 , Q6ZN16 , Q21029
Reactivity	Human
Predicted	Mouse, C.Elegans
Host	Rabbit
Clonality	Polyclonal
Isotype	Rabbit IgG
Calculated MW	154537
Antigen Region	821-849

MAP3K5 Antibody(T842) - Additional Information**Gene ID** 4217**Other Names**

Mitogen-activated protein kinase kinase kinase 5, Apoptosis signal-regulating kinase 1, ASK-1, MAPK/ERK kinase kinase 5, MEK kinase 5, MEKK 5, MAP3K5, ASK1, MAPKKK5, MEKK5

Target/Specificity

This MAP3K5 antibody is generated from rabbits immunized with a KLH conjugated synthetic peptide between 821-849 amino acids from human MAP3K5.

Dilution

WB~~1:2000

IHC-P~~1:10~50

E~~Use at an assay dependent concentration.

Format

Purified polyclonal antibody supplied in PBS with 0.09% (W/V) sodium azide. This antibody is purified through a protein A column, followed by peptide affinity purification.

Storage

Maintain refrigerated at 2-8°C for up to 2 weeks. For long term storage store at -20°C in small aliquots to prevent freeze-thaw cycles.

Precautions

MAP3K5 Antibody(T842) is for research use only and not for use in diagnostic or therapeutic procedures.

MAP3K5 Antibody(T842) - Protein Information

Name MAP3K5

Synonyms ASK1, MAPKKK5, MEKK5

Function Serine/threonine kinase which acts as an essential component of the MAP kinase signal transduction pathway. Plays an important role in the cascades of cellular responses evoked by changes in the environment. Mediates signaling for determination of cell fate such as differentiation and survival. Plays a crucial role in the apoptosis signal transduction pathway through mitochondria-dependent caspase activation. MAP3K5/ASK1 is required for the innate immune response, which is essential for host defense against a wide range of pathogens. Mediates signal transduction of various stressors like oxidative stress as well as by receptor-mediated inflammatory signals, such as the tumor necrosis factor (TNF) or lipopolysaccharide (LPS). Once activated, acts as an upstream activator of the MKK/JNK signal transduction cascade and the p38 MAPK signal transduction cascade through the phosphorylation and activation of several MAP kinase kinases like MAP2K4/SEK1, MAP2K3/MKK3, MAP2K6/MKK6 and MAP2K7/MKK7. These MAP2Ks in turn activate p38 MAPKs and c-jun N-terminal kinases (JNKs). Both p38 MAPK and JNKs control the transcription factors activator protein-1 (AP-1).

Cellular Location

Cytoplasm. Endoplasmic reticulum. Note=Interaction with 14-3-3 proteins alters the distribution of MAP3K5/ASK1 and restricts it to the perinuclear endoplasmic reticulum region

Tissue Location

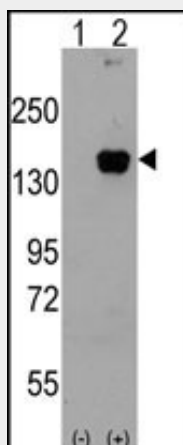
Abundantly expressed in heart and pancreas.

MAP3K5 Antibody(T842) - Protocols

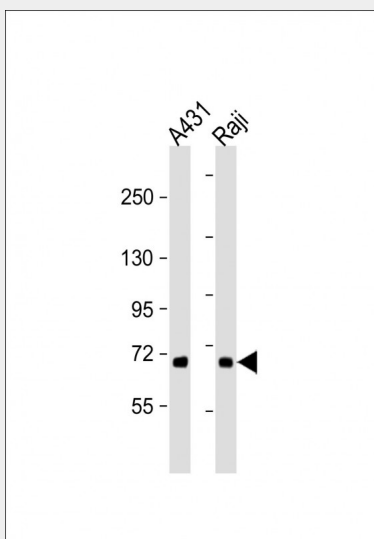
Provided below are standard protocols that you may find useful for product applications.

- [Western Blot](#)
- [Blocking Peptides](#)
- [Dot Blot](#)
- [Immunohistochemistry](#)
- [Immunofluorescence](#)
- [Immunoprecipitation](#)
- [Flow Cytometry](#)
- [Cell Culture](#)

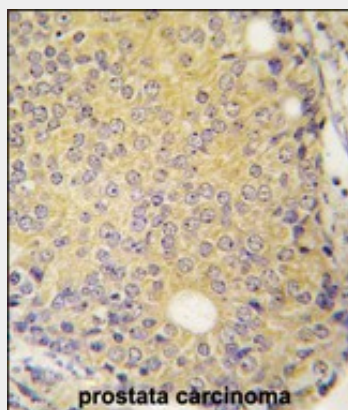
MAP3K5 Antibody(T842) - Images



Western blot analysis of MAP3K5 (arrow) using rabbit polyclonal MAP3K5 Antibody (Cat.#AP7911g).293 cell lysates (2 ug/lane) either nontransfected (Lane 1) or transiently transfected with the MAP3K5 gene (Lane 2) (Origene Technologies).



All lanes : Anti-MAP3K5 Antibody (T842) at 1:2000 dilution Lane 1: A431 whole cell lysate Lane 2: Raji whole cell lysate Lysates/proteins at 20 µg per lane. Secondary Goat Anti-Rabbit IgG, (H+L), Peroxidase conjugated at 1/10000 dilution. Predicted band size : 155 kDa Blocking/Dilution buffer: 5% NFDM/TBST.



Formalin-fixed and paraffin-embedded human prostata carcinoma tissue reacted with MAP3K5 Antibody (T842) (Cat.#AP7911g), which was peroxidase-conjugated to the secondary antibody, followed by DAB staining. This data demonstrates the use of this antibody for immunohistochemistry; clinical relevance has not been evaluated.

MAP3K5 Antibody(T842) - Background

Mitogen-activated protein kinase (MAPK) signaling cascades include MAPK or extracellular signal-regulated kinase (ERK), MAPK kinase (MKK or MEK), and MAPK kinase kinase (MAPKKK or MEKK). MAPKK kinase/MEKK phosphorylates and activates its downstream protein kinase, MAPK kinase/MEK, which in turn activates MAPK. The kinases of these signaling cascades are highly conserved, and homologs exist in yeast, Drosophila, and mammalian cells. MAPKKK5 contains 1,374 amino acids with all 11 kinase subdomains. Northern blot analysis shows that MAPKKK5 transcript is abundantly expressed in human heart and pancreas. The MAPKKK5 protein phosphorylates and activates MKK4 (aliases SERK1, MAPKK4) in vitro, and activates c-Jun N-terminal kinase (JNK)/stress-activated protein kinase (SAPK) during transient expression in COS and 293 cells; MAPKKK5 does not activate MAPK/ERK.

MAP3K5 Antibody(T842) - References

Min,W.,Circ. Res. 102 (7), 840-848 (2008)
Li,X.,Cell Death Differ. 15 (4), 739-750 (2008)
Noguchi,T.,J. Biol. Chem. 283 (12), 7657-7665 (2008)